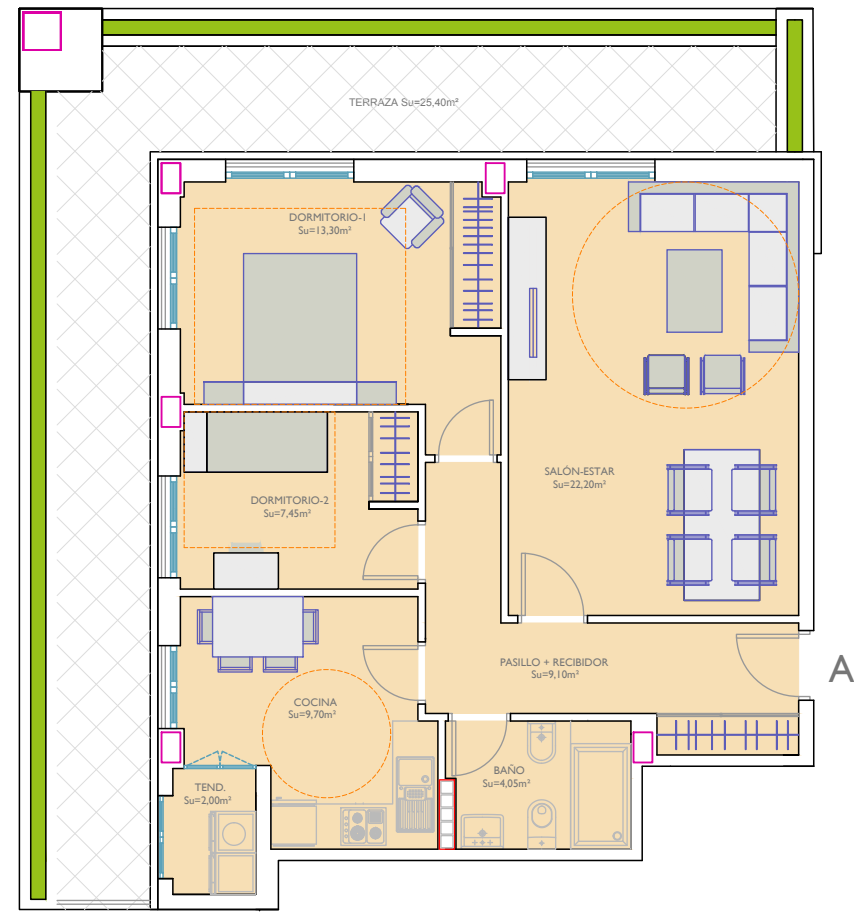
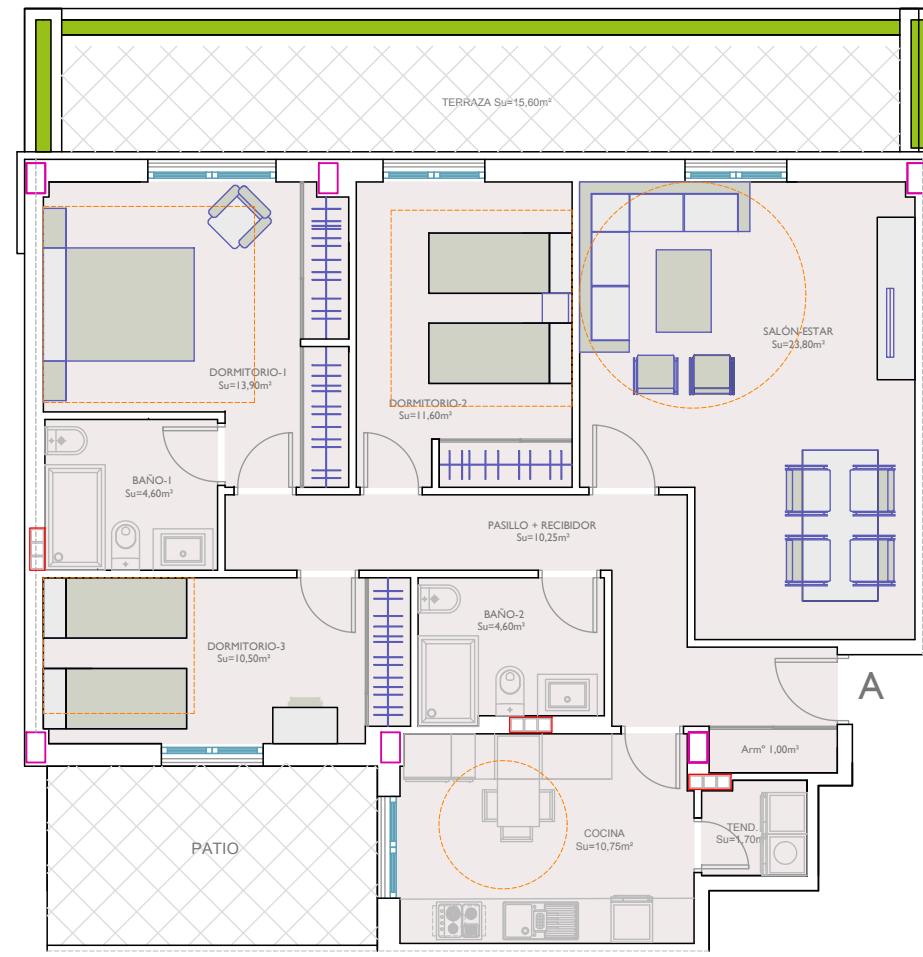


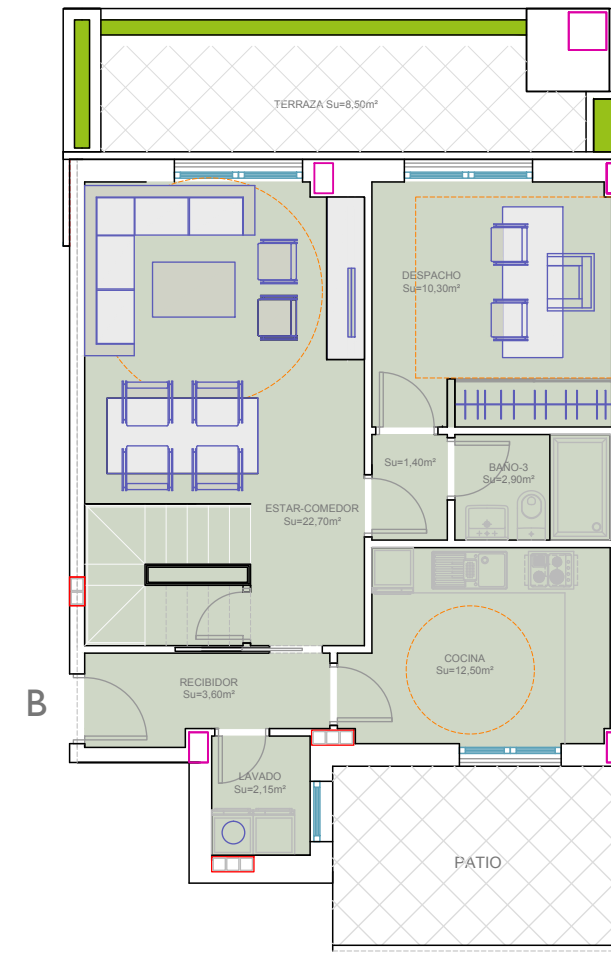
Planta Baja VIVIENDA A - PORTAL-1
Su=67,80m² + 25,40m² terraza 2 dorm.



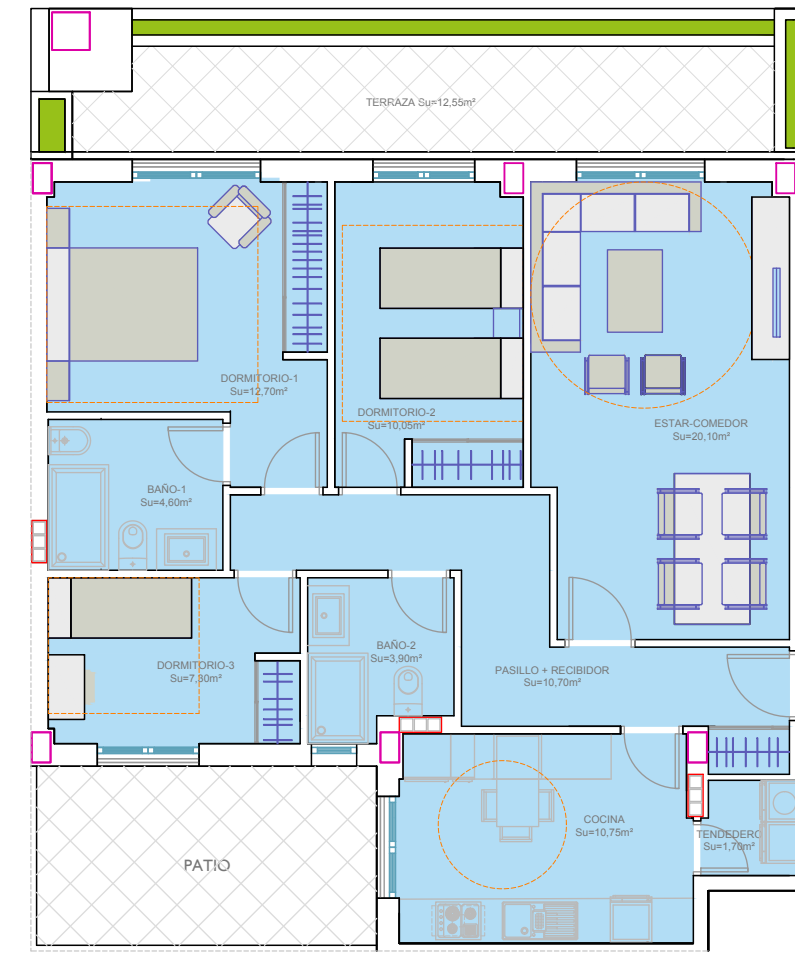
Planta Baja VIVIENDA A - PORTAL-2
Su=92,70m² + 15,60m² terraza 3 dorm.



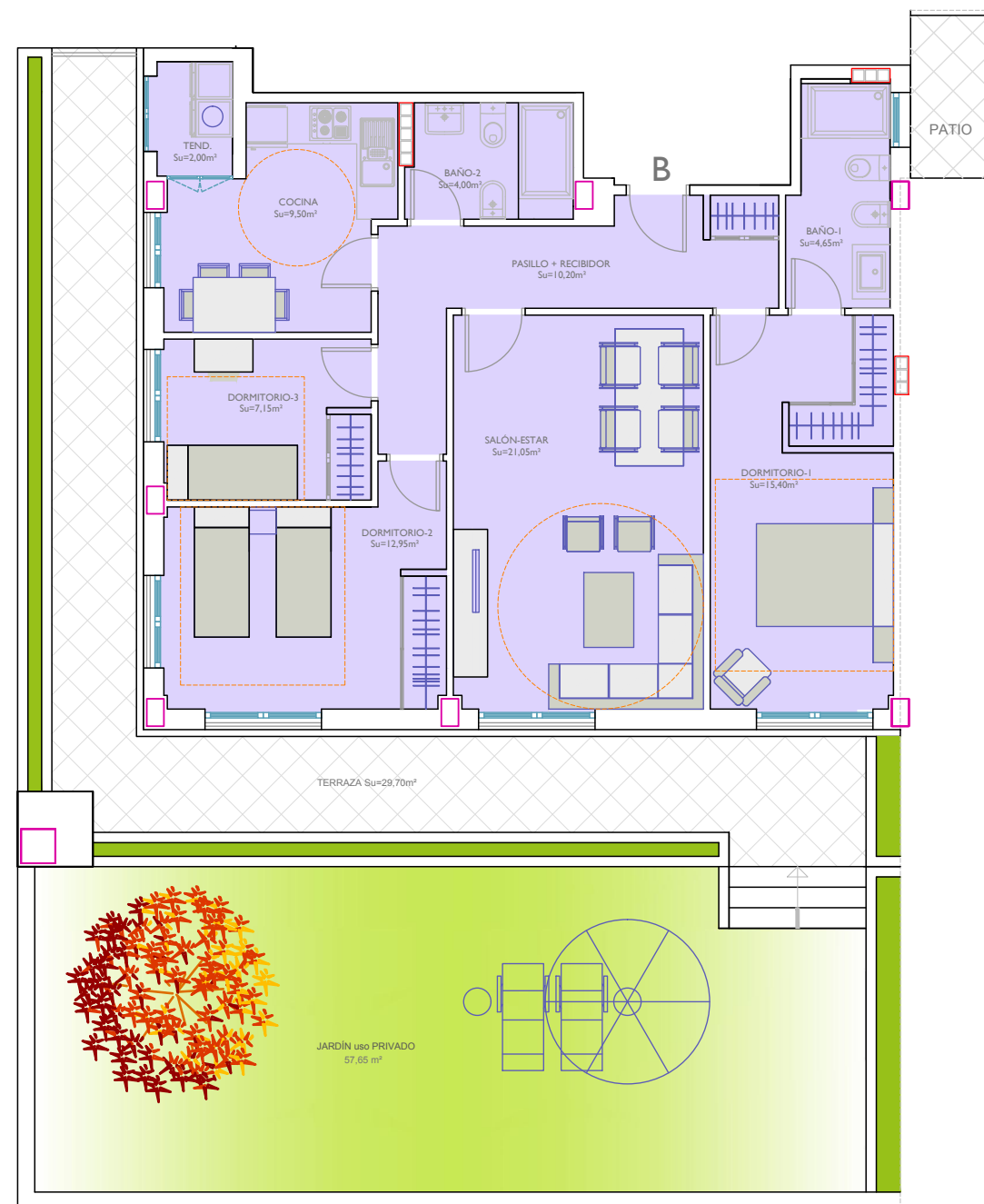
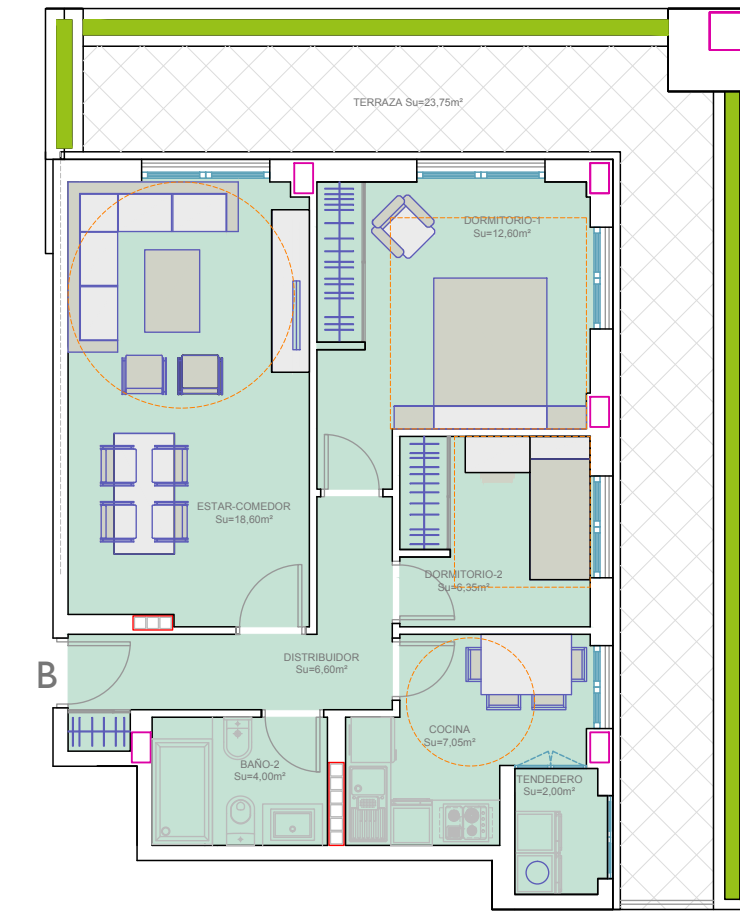
Planta Baja VIV. DUPLEX B - PORTAL-2
Su=102,95m² + 8,50m² terraza 4 dorm.



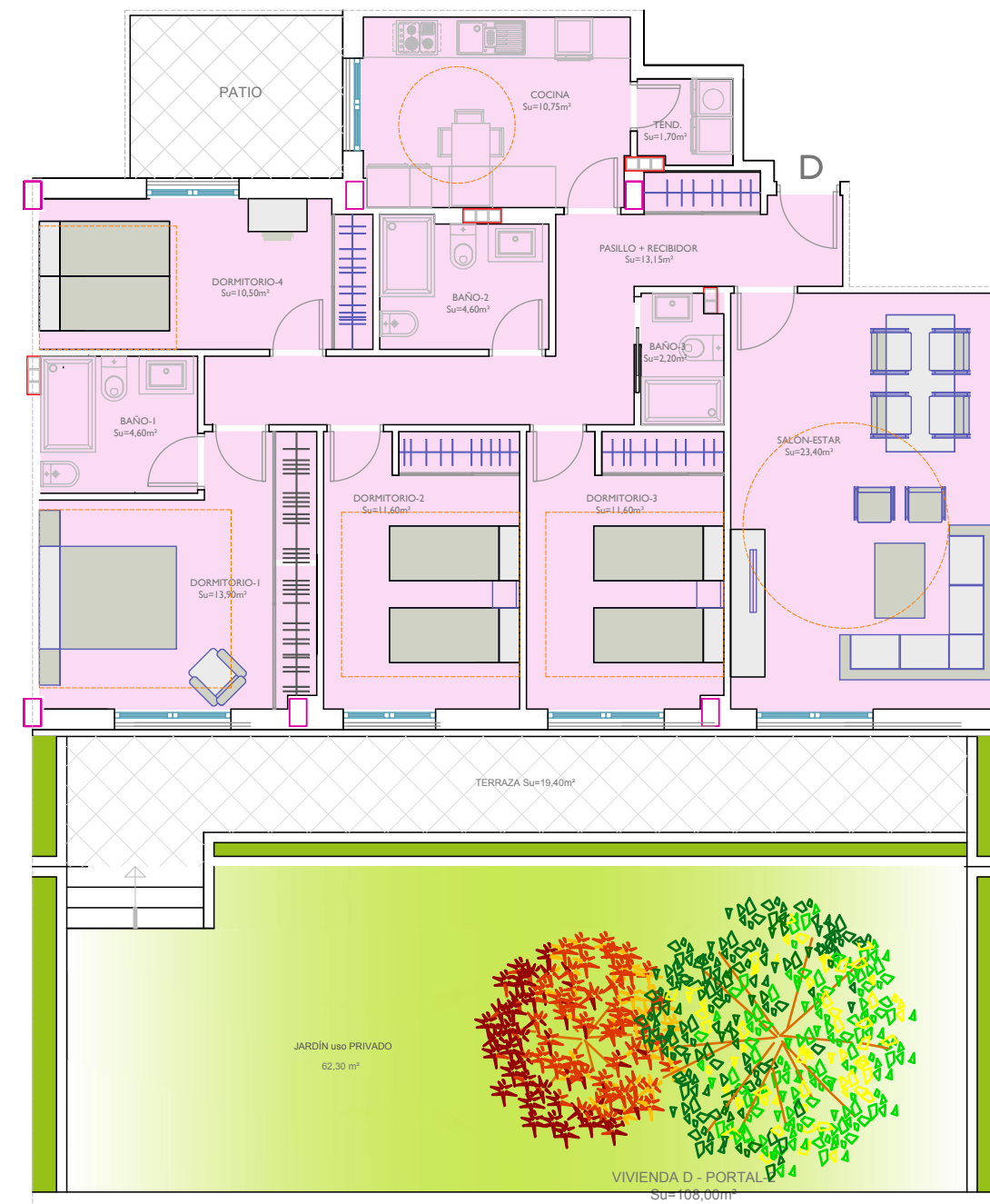
Planta Baja VIVIENDA A - PORTAL-3
Su=81,80m² + 12,60m² terraza 3 dorm.



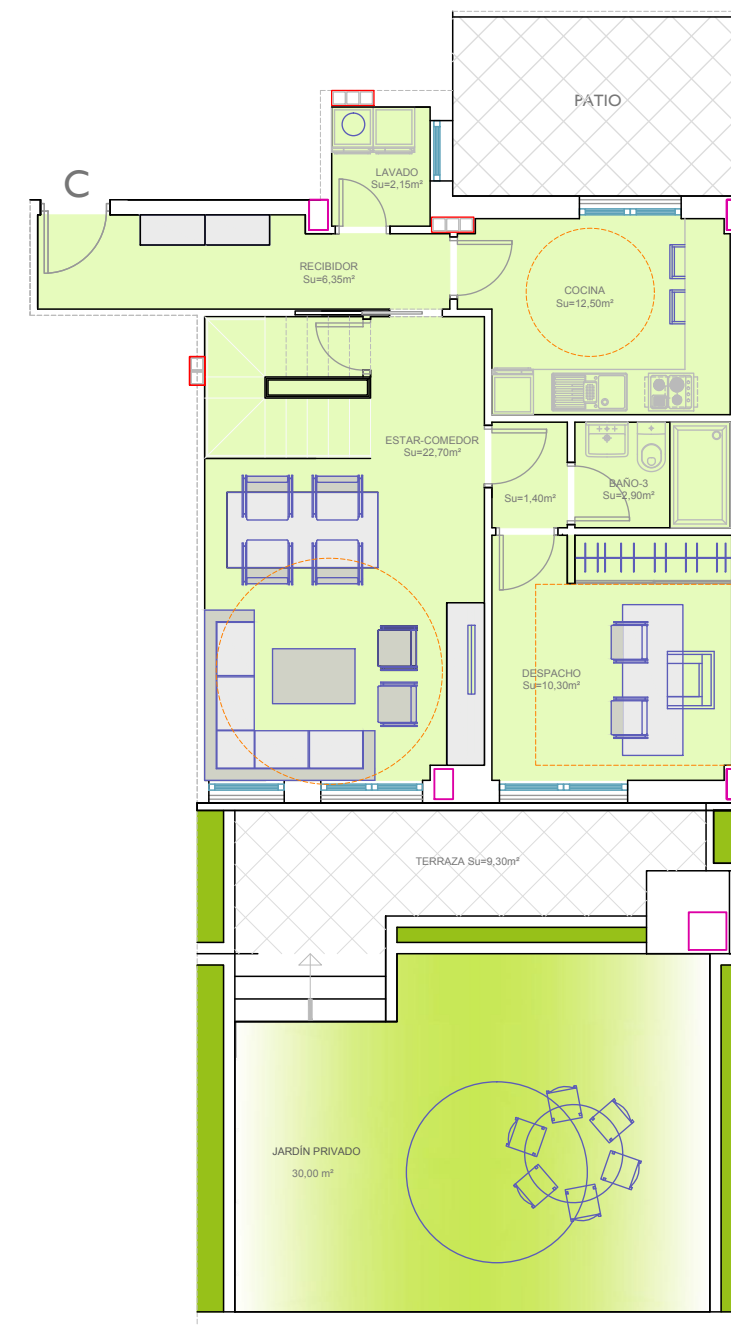
Planta Baja VIVIENDA B - PORTAL-3
Su=67,20m² + 23,70m² terraza 2 dorm.



Planta Baja VIVIENDA B - PORTAL-1
Su=86,90m² + 29,70 m² terraza 3 dorm.



Planta Baja VIVIENDA D - PORTAL-2
Su=108,00m² + 19,40m² terraza 4 dorm.

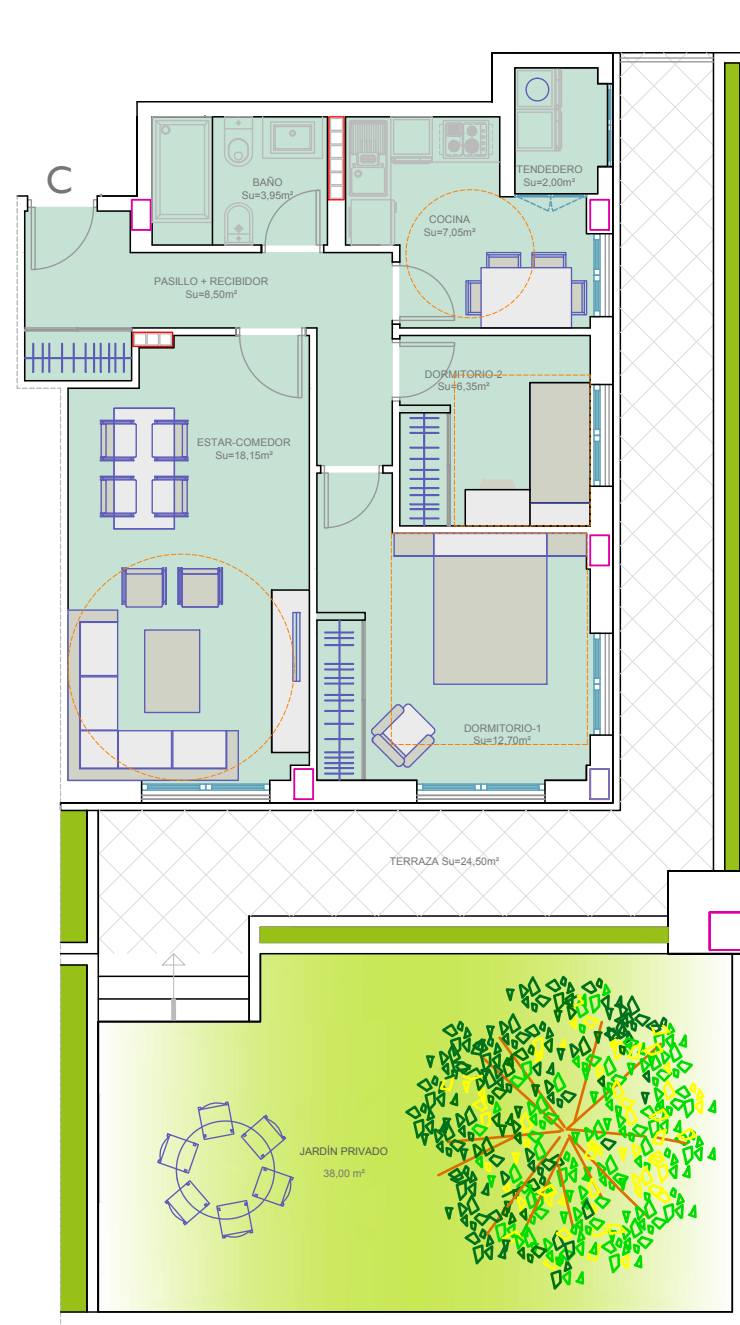


Planta Baja VIV. DUPLEX C - PORTAL-2
Su=108,30m² + 9,30m² terraza 4 dorm.

TOTAL VIV. DUPLEX C - PORTAL-2
Su=105,70m² + 9,30m² terraza



Planta Baja VIVIENDA D - PORTAL-3
Su=98,00m² + 16,65m² terraza 4 dorm.

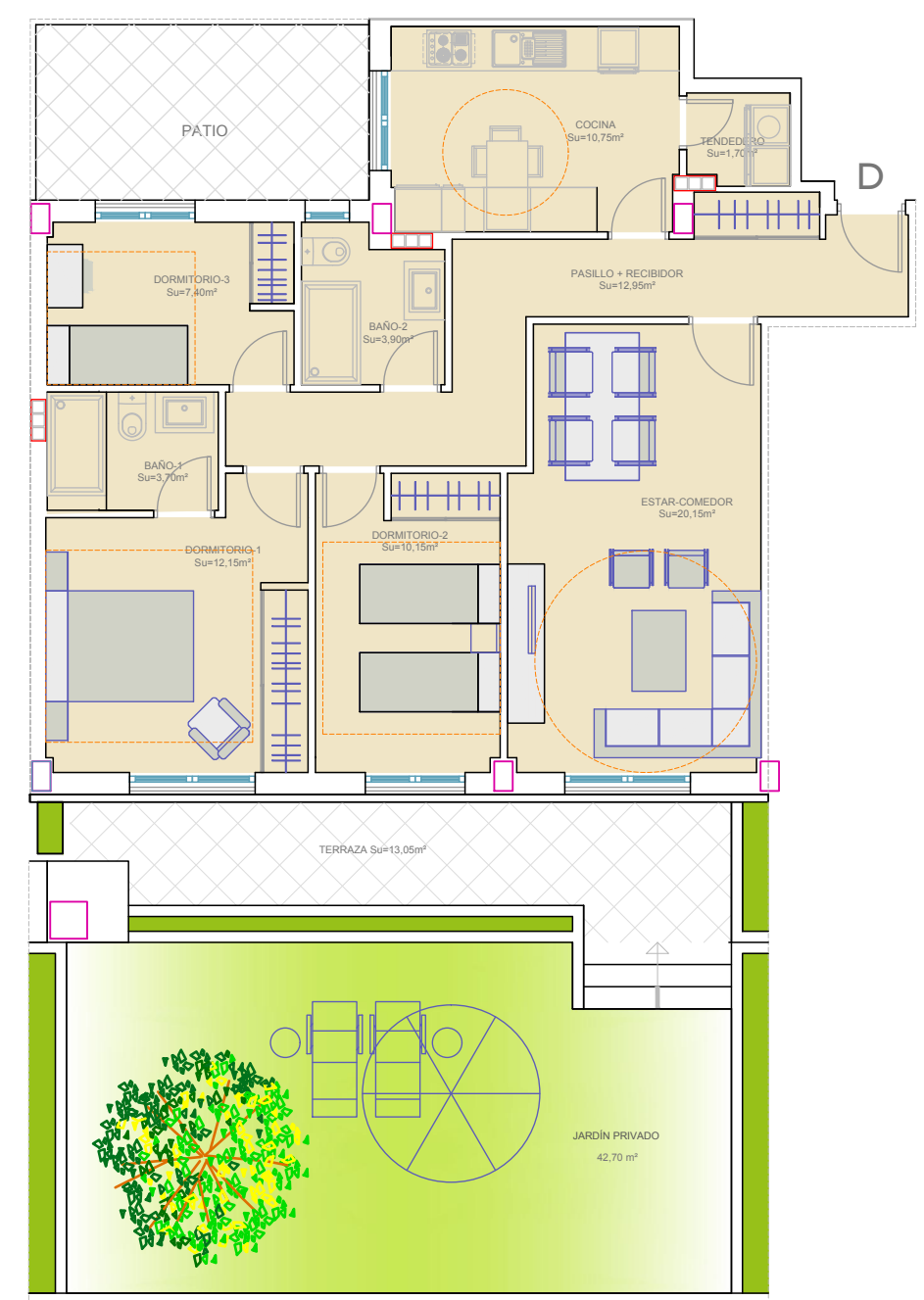


Planta Baja VIVIENDA C - PORTAL-3
Su=68,70m² + 24,50m² terraza 2 dorm.

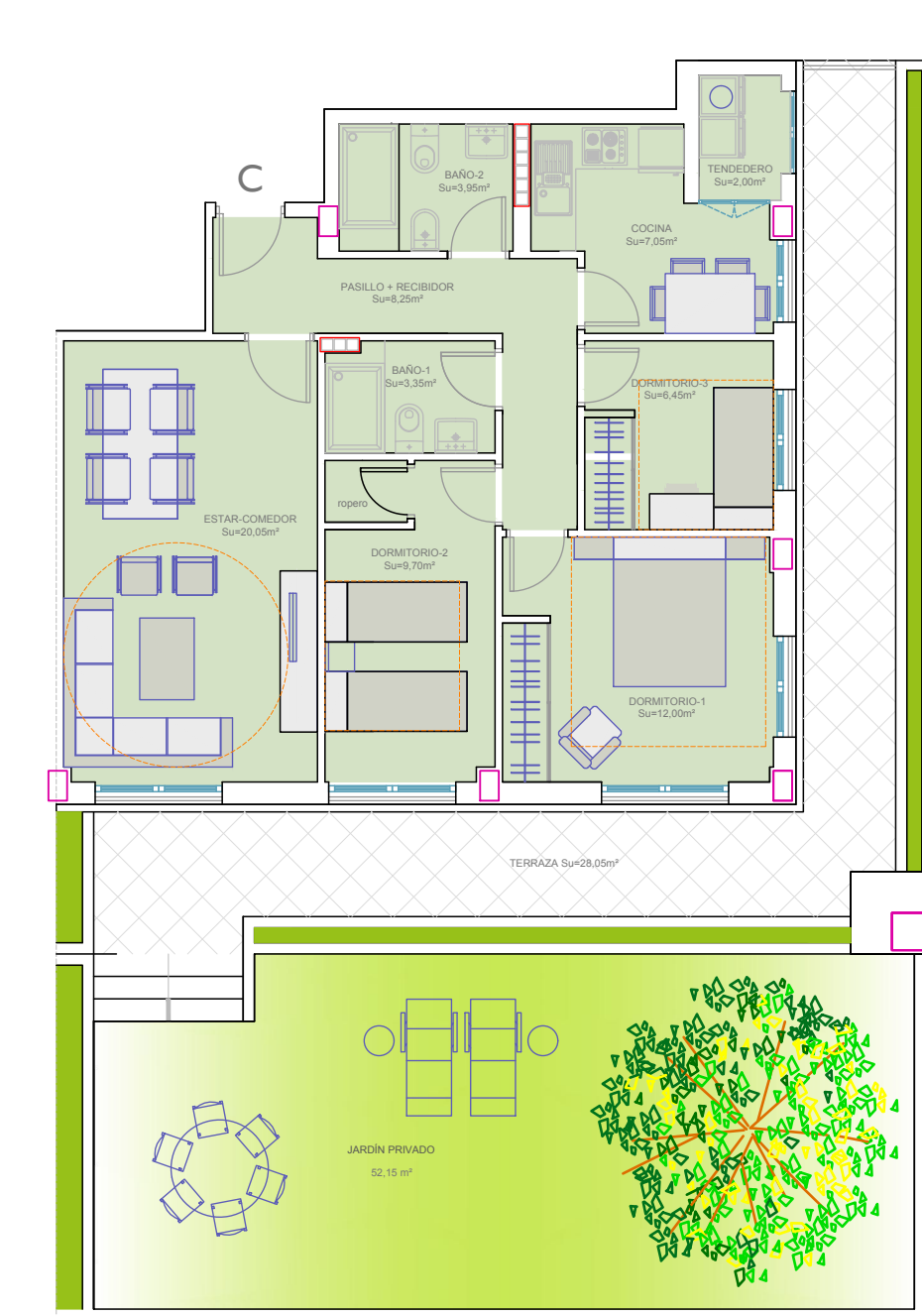
VIVIENDAS EN PLANTA BAJA



OPCIÓN 2



Planta Baja VIVIENDA D - PORTAL-3
Su=93,80m² + 13,00m² terraza 3 dorm.



Planta Baja VIVIENDA C - PORTAL-3
Su=72,80m² + 28,00m² terraza 3 dorm.